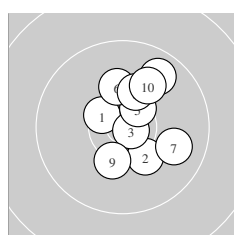
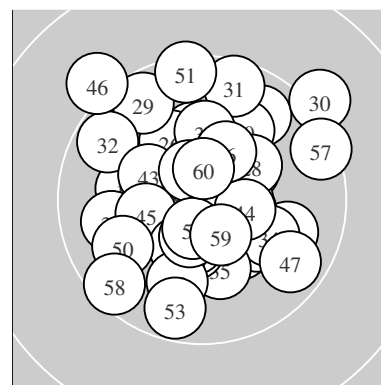
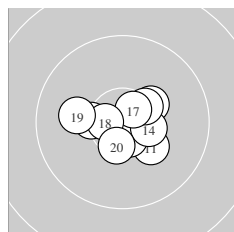


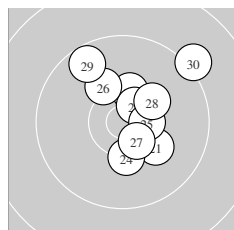
Ergebnis:	612.6	(586)
Serien:	102.4	104.1 101.8 101.8 101.7 100.8
Zähler:	46	14 0 0 0 0 0 0 0 0
Innenzehner:	30	
weiteste:	1435	(46), 1412 (30), 1184 (57)
beste Teiler	137.0	(3.) 188.0 (40.) 251.0 (17.)
Trefferlage	0.20 mm	rechts, 0.35 mm hoch
Streuwert	4.77,	horizontal: 4.53, vertikal: 4.99



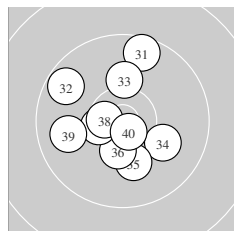
Serie 1:	10.5 *	10.2 ↘	10.8 *	9.8 ↗	10.5 *
	10.2 ↑	9.9 ↘	10.2 ↑	10.3 ↓	10.0 ↗
beste Teiler	137.0	(3.) 364.8 (1.) 370.3 (5.)			
Trefferlage	2.05 mm	rechts, 1.72 mm hoch			
Streuwert	4.10,	horizontal: 3.31, vertikal: 4.75			



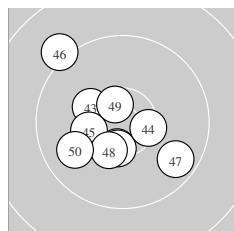
Serie 2:	10.2 ↘	10.6 *	10.3 *	10.4 *	10.4 *
	10.4 *	10.6 *	10.6 *	10.1 ←	10.5 *
beste Teiler	251.0	(17.) 266.0 (18.) 274.2 (12.)			
Trefferlage	0.33 mm	rechts, 0.24 mm tief			
Streuwert	3.31,	horizontal: 4.04, vertikal: 2.38			



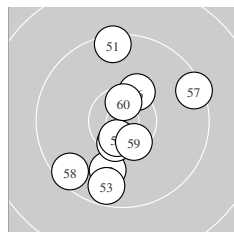
Serie 3:	10.2 ↘	10.3 *	10.6 *	10.3 ↓	10.5 *
	10.2 ↘	10.5 *	10.3 ↗	9.7 ↘	9.2 ↗
beste Teiler	312.8	(23.) 358.8 (27.) 373.0 (25.)			
Trefferlage	2.13 mm	rechts, 2.18 mm hoch			
Streuwert	4.78,	horizontal: 4.44, vertikal: 5.09			



Serie 4:	9.6 ↑	9.7 ↘	10.2 ↑	10.1 ↘	10.1 ↓
	10.4 *	10.5 *	10.6 *	9.9 ←	10.7 *
beste Teiler	188.0	(40.) 275.8 (38.) 373.1 (37.)			
Trefferlage	1.21 mm	links, 0.36 mm hoch			
Streuwert	5.01,	horizontal: 4.71, vertikal: 5.30			



Serie 5:	10.5 *	10.4 *	10.3 ↘	10.4 *	10.3 *
	9.2 ↘	9.7 ↘	10.4 *	10.6 *	9.9 ←
beste Teiler	291.1	(49.) 392.5 (41.) 402.1 (44.)			
Trefferlage	1.97 mm	links, 0.86 mm tief			
Streuwert	5.08,	horizontal: 5.21, vertikal: 4.95			



Serie 6:	9.5 ↑	10.0 ↓	9.7 ↓	10.5 *	10.6 *
	10.3 *	9.5 ↗	9.6 ↗	10.5 *	10.6 *
beste Teiler	274.4	(55.) 287.2 (60.) 355.7 (54.)			
Trefferlage	0.13 mm	links, 1.06 mm tief			
Streuwert	5.88,	horizontal: 4.78, vertikal: 6.80			

ISSF Prone Men – Wertung – Men

StandNr: 44

Poltermann, Norbert #44250512

StartNr: 70

5. September 2020 16:23

SV Groß und Kleinkaliber

Unterschrift des Schützen

Meyton Elektronik