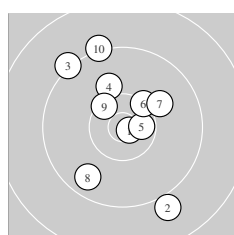
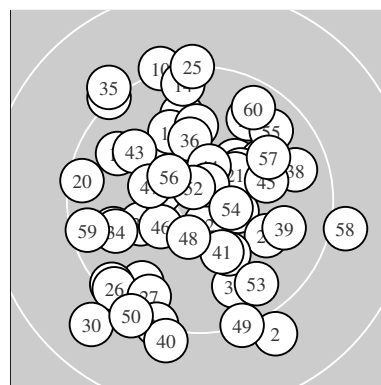
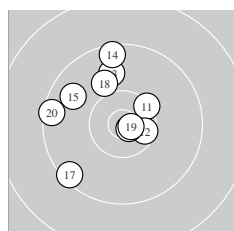


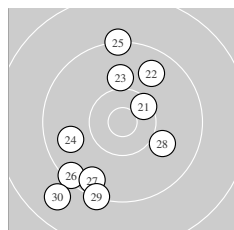
Ergebnis:	568	(593.7) ^{QF}				
Serien:	96	95	92	94	97	94
Zähler:	29	30	1	0	0	0
Innenzehner:	14					
weiteste:	1706 (30), 1586 (2), 1531 (58)					
beste Teiler	126.7 (1.) 133.1 (16.) 146.2 (52.)					
Trefferlage	0.68 mm links, 0.07 mm tief					
Streuwert	6.72, horizontal: 6.13, vertikal: 7.26					



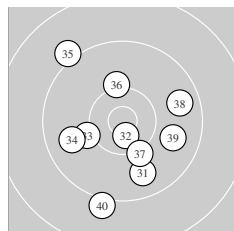
Serie 1:	10.8 *	9.0 ↘	9.2 ↘	10.0 ↑	10.5 *
	10.3 ↗	10.0 ↗	9.6 ↙	10.4 ↘	9.2 ↑
beste Teiler	126.7 (1.) 328.2 (5.) 479.0 (9.)				
Trefferlage	0.27 mm links, 2.01 mm hoch				
Streuwert	7.06, horizontal: 5.60, vertikal: 8.27				



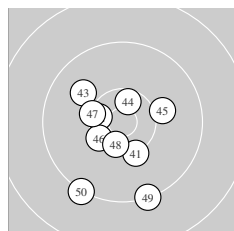
Serie 2:	10.3 ↗	10.5 *	9.8 ↑	9.4 ↑	9.7 ↘
	10.8 *	9.4 ↙	10.0 ↘	10.8 *	9.4 ←
beste Teiler	133.1 (16.) 150.0 (19.) 400.1 (12.)				
Trefferlage	2.60 mm links, 2.65 mm hoch				
Streuwert	5.78, horizontal: 5.66, vertikal: 5.90				



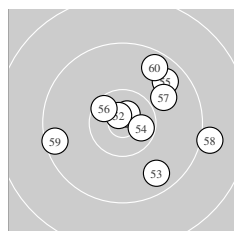
Serie 3:	10.4 *	9.7 ↗	10.0 ↑	9.8 ←	9.2 ↑
	9.4 ↙	9.5 ↙	10.0 ↘	9.3 ↓	8.8 ↙
beste Teiler	451.8 (21.) 764.9 (23.) 778.0 (28.)				
Trefferlage	2.44 mm links, 1.90 mm tief				
Streuwert	8.11, horizontal: 6.30, vertikal: 9.58				



Serie 4:	9.8 ↘	10.6 *	10.1 ←	9.8 ←	9.1 ↘
	10.2 ↑	10.2 ↘	9.7 →	9.8 →	9.1 ↓
beste Teiler	255.9 (32.) 631.7 (37.) 635.5 (36.)				
Trefferlage	0.32 mm links, 1.90 mm tief				
Streuwert	7.10, horizontal: 6.73, vertikal: 7.45				



Serie 5:	10.2 ↘	10.4 *	9.9 ↘	10.5 *	10.1 →
	10.3 ↙	10.3 ←	10.4 *	9.2 ↓	9.2 ↙
beste Teiler	362.1 (44.) 402.0 (48.) 413.6 (42.)				
Trefferlage	1.39 mm links, 2.40 mm tief				
Streuwert	5.57, horizontal: 4.83, vertikal: 6.22				



Serie 6:	10.7 *	10.8 *	9.6 ↘	10.5 *	9.7 ↗
	10.4 *	9.9 ↗	9.0 →	9.4 ←	9.6 ↗
beste Teiler	146.2 (52.) 173.9 (51.) 330.8 (54.)				
Trefferlage	2.92 mm rechts, 1.08 mm hoch				
Streuwert	6.32, horizontal: 7.19, vertikal: 5.31				

Meyton Elektronik

ISSF AP Women – Wertung – Women

StandNr: 6

Wehage, Michelle #999903028

StartNr: 117

5. September 2020 10:00

Dänemark

QF – Schütze hat sich fürs Finale qualifiziert

Unterschrift des Schützen

Meyton Elektronik